



Because families deserve the best care.

Family medicine. We're dedicated
to comprehensive, personalized care
for the whole person, the whole family.
Learn more at www.fm.umn.edu.



Family Medicine and Community Health

UNIVERSITY OF MINNESOTA

Driven to DiscoverSM



MISSION

Preeminent scholarship in family medicine education, research, and innovative health service delivery that improves the health of people and communities of Minnesota and the nation

TABLE OF CONTENTS

5	About
7	Education: Resident
8	Education: Medical Student
9	Education: Fellow
10	Education: Continuing
11	Program in Human Sexuality
12	Research & Scholarship
14	Patient Care
16	Community & Global Health
17	Financials
18	Contact Us



Family Medicine and Community Health

UNIVERSITY OF MINNESOTA

Driven to DiscoverSM



University of Minnesota Family Medicine and Community Health head **Macaran Baird, MD, MS**, (center) and faculty **Bill Roberts, MD, MS**, meet with **Congresswoman Betty McCollum** to discuss community-based primary care and education.

Transforming family medicine through education, research, and patient care

About

The University of Minnesota Department of Family Medicine and Community Health is one of the largest departments in the Medical School, reaching across both the Duluth and Twin Cities campuses.

EDUCATION

Our resident, medical student, fellow, and continuing education activities focus on innovative didactic and practice experiences.

RESEARCH

We are consistently ranked among the top National Institutes of Health-funded family medicine departments.

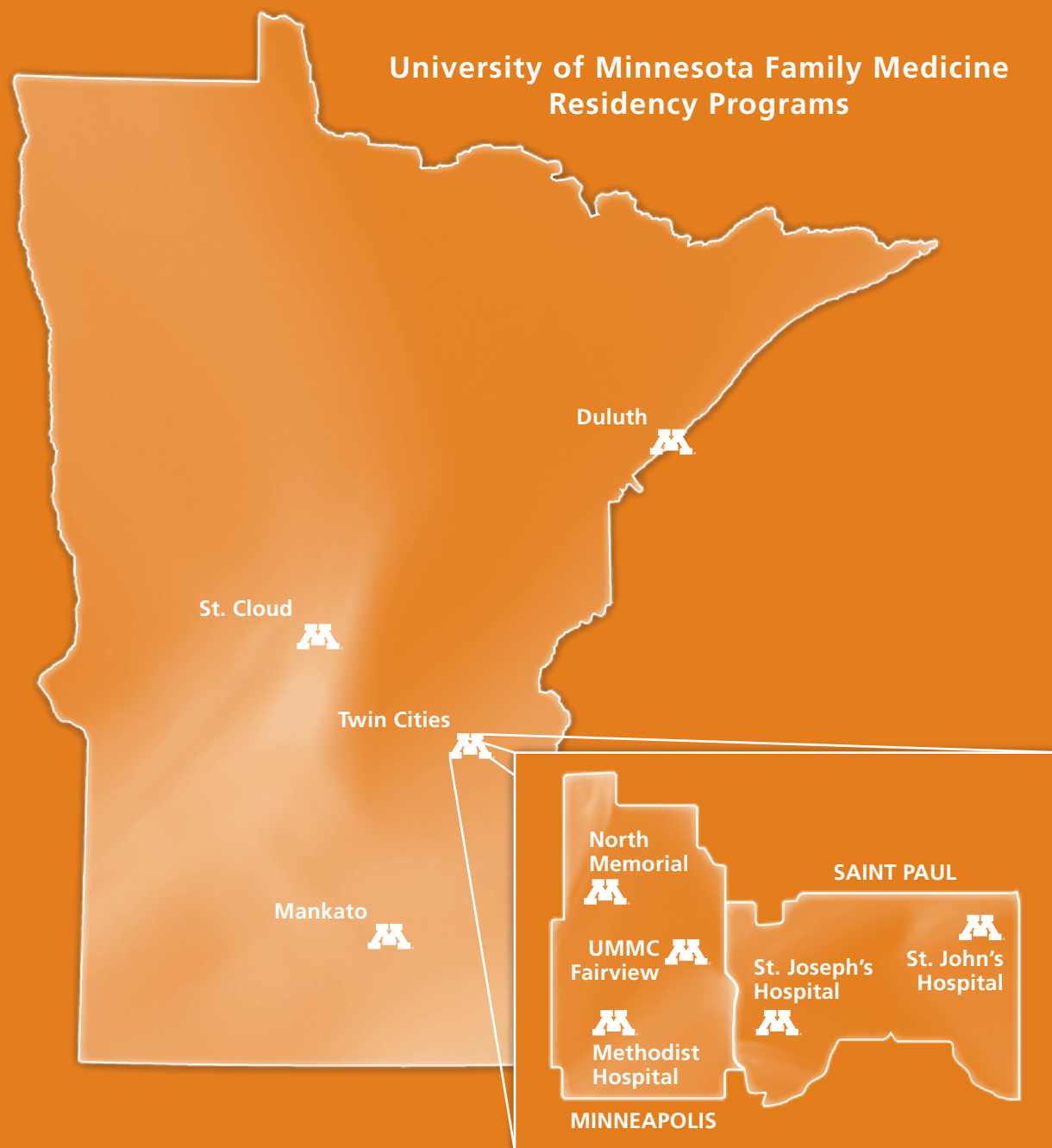
Research foci include care and prevention of chronic diseases; health disparities; human sexuality; medical education; mental and behavioral health; practice-based research; sports medicine; and women's health.

PATIENT CARE

We have embraced the health care home model of care and modified our practices to include a team-based approach, integrated mental health services, and patient complexity assessment.

We are proud of our rich history in family medicine, working to renew and transform our specialty through education, research, and patient care.

University of Minnesota Family Medicine Residency Programs



Education: Resident

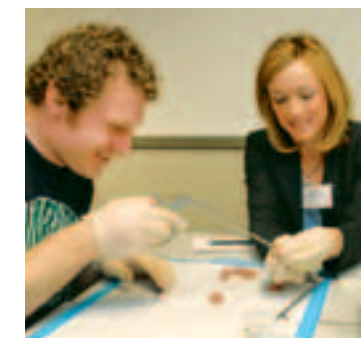
The University of Minnesota has eight family medicine residencies—five in the Twin Cities and three in Greater Minnesota.

1. **Duluth**—Duluth Family Practice Center
2. **Mankato**—Mayo Clinic Health System Eastridge
3. **Methodist Hospital**—Park Nicollet Clinic-Creekside
4. **North Memorial**—Broadway Family Medicine
5. **St. Cloud Hospital**—Mid-Minnesota Family Medicine Center
6. **St. John's Hospital**—Phalen Village Clinic
7. **St. Joseph's Hospital**—Bethesda Clinic
8. **University of Minnesota Medical Center (UMMC), Fairview**—Smiley's Clinic

Each program is distinguished by its community, unique feel, and curricular strengths, but all share in the commitment to full spectrum family medicine training.

LEARN MORE

www.fm.umn.edu/education/residency



Education: Medical Student

Duluth and Twin Cities campus faculty are committed to inspiring medical students to pursue careers in family medicine.

COURSES AND CLERKSHIPS

Course and clerkship topics include community clinical medicine, patient encounters, physician-patient communication, and rural health care, with a broad scope of elective opportunities.

FAMILY MEDICINE INTEREST GROUPS

Family medicine interest groups are offered on both campuses, providing students an opportunity to deepen their understanding of the specialty.

Activities include book clubs, community service, faculty dinner series, lunchtime lectures, and procedural workshops.

IMMERSION EXPERIENCES

Department faculty coordinate and support two immersion experiences for students – the internationally recognized Rural Physician Associate Program (RPAP) and Metro Physician Associate Program (MetroPAP).



Education: Fellow

Family medicine sponsors fellowship programs in behavioral medicine, hospice and palliative medicine, human sexuality, and sports medicine.

BEHAVIORAL MEDICINE

Two-year, Association of Psychological Postdoctoral and Internship Centers (APPIC)-accredited training program in the integration of behavioral medicine in primary care

HOSPICE AND PALLIATIVE MEDICINE

One-year, Accreditation Council for Graduate Medical Education (ACGME)-accredited training program in symptom relief and pain management of patients suffering from advanced or progressive illnesses

HUMAN SEXUALITY

Two-year, APPIC-accredited training program in assessment, promotion, research, and treatment of a variety of sexual health issues

SPORTS MEDICINE

One-year, ACGME-accredited training program committed to its national reputation for producing superior sports medicine clinicians



Education: Continuing

We offer a variety of continuing medical education opportunities.

CONFERENCES

The department sponsors several annual conferences for primary care providers, featuring medical updates and management strategies in dermatology, family medicine, and sports medicine.

FACULTY DEVELOPMENT

Faculty have the opportunity to enroll in a six-month hands-on training program, covering career development, curriculum design and evaluation, and teaching skills.

GRAND ROUNDS

Each month faculty present topics of relevance to family medicine in an academic context.



Program in Human Sexuality

The Program in Human Sexuality (PHS) is one of the largest clinical, teaching, and research programs specializing in human sexuality.

CARE

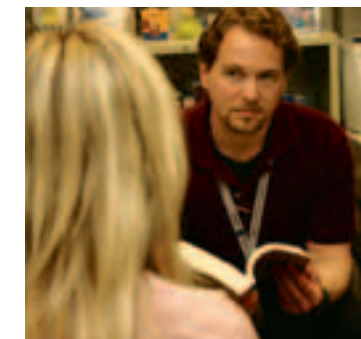
At our Center for Sexual Health, we treat individuals and couples for a variety of sexual health concerns.

EDUCATION

We are involved in medical student, resident, and fellow human sexuality and behavioral medicine education via workshops, consultations, and clinical training.

RESEARCH

We have a strong research agenda focused on HIV prevention, compulsive sexual behavior, transgender health, and women's sexual health.



Research & Scholarship

We are consistently ranked among the top National Institutes of Health-funded family medicine departments.

RESEARCH AREAS INCLUDE

- Care and prevention of chronic diseases
- Health disparities
- Human sexuality
- Medical education
- Mental and behavioral health
- Practice-based research
- Sports medicine
- Women's health



Faculty lead a number of innovative research centers and programs.

CENTER OF EXCELLENCE IN PRIMARY CARE

Improving primary care delivery through practice-based research and quality improvement

www.fm.umn.edu/research/coepc

CITIZEN HEALTH CARE PROGRAM

Conducting and promoting community-based participatory research

www.cehd.umn.edu/cpc

PROGRAM IN HEALTH DISPARITIES RESEARCH

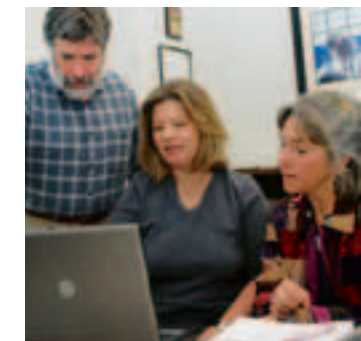
Seeking to eliminate health inequities through collaborative research, innovative education, and community partnerships

www.healthdisparities.umn.edu

PROGRAM IN HUMAN SEXUALITY

Advancing the sexual health of Minnesota, the nation, and world through innovative education and therapies, cutting-edge research, and public policy and community health advocacy

www.phs.umn.edu



Patient Care

Our clinics serve diverse patient populations, ranging from infants to the elderly and running the spectrum of ethnicities and socioeconomic backgrounds.



HEALTH CARE HOME

The Minnesota Department of Health defines health care or medical homes as *an approach to primary care in which providers and patients and their families collaborate to improve health outcomes and quality of life.*

Each of our department-sponsored clinics is certified as a health care home.

INTEGRATED BEHAVIORAL HEALTH SERVICES

We have integrated behavioral health services into primary care to more fully address the spectrum of problems our patients face.

PATIENT COMPLEXITY

We are using the Minnesota Complexity Assessment Method[®] in our practices, helping to identify barriers impeding patient care and understand social determinants of health.

SPORTS MEDICINE

We have specialty trained primary care sports medicine physicians providing care in the clinic, in the training room, and game-side.

TEAM-BASED CARE

We use a multidisciplinary team approach to care coordination, which improves patient care quality and safety.



Community & Global Health

Faculty, residents, and medical students are actively engaged in serving underserved and traumatized communities at home and abroad through education, research, and patient care.

OUTREACH ACTIVITIES INCLUDE

- Care at community clinics and as part of community initiatives
- Chronic disease prevention
- Citizen health care
- Community education
- Medical care for the underserved
- Nursing home care and home visits
- Trauma response

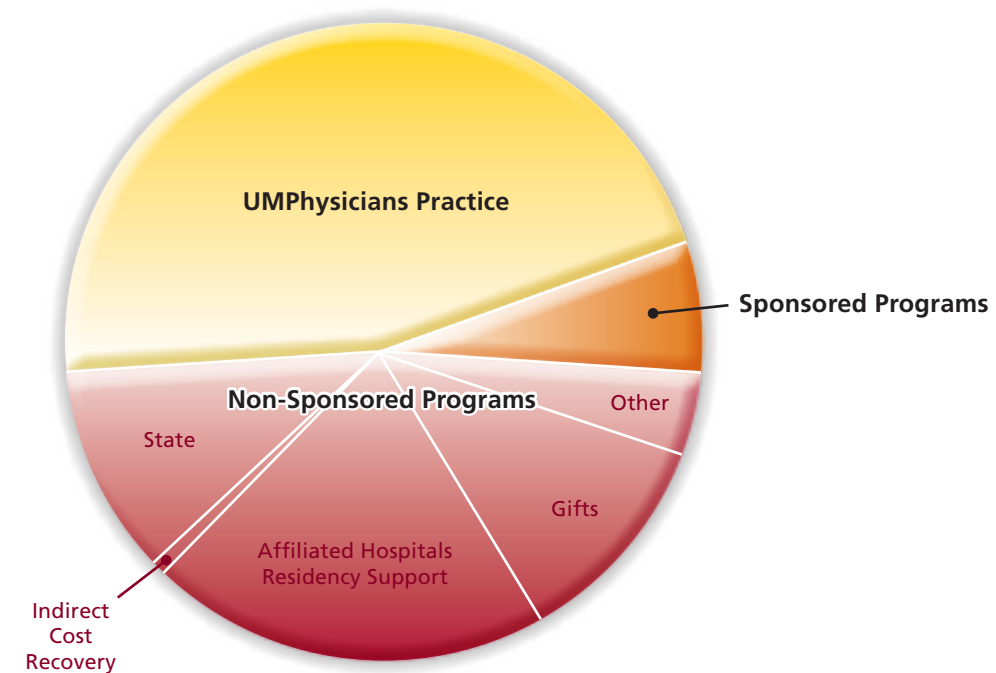
GLOBAL FAMILY MEDICINE PATHWAY

Residents have the opportunity to enroll in a longitudinal educational track with structured international experiences, equipping them with knowledge and skills to care for global citizens.



Financials

Major Funding Sources



GIVE

Visit www.fm.umn.edu/gift to support family medicine research, education, and clinical innovation.

Contact Us

612-624-2622

fmch@umn.edu

CENTRAL ADMINISTRATIVE OFFICE

6-240 Phillips-Wangensteen Building

516 Delaware St. SE

Minneapolis, MN 55455

MAILING ADDRESS

MMC 381

420 Delaware St. SE

Minneapolis, MN 55455

VISIT US ON THE WEB

www.fm.umn.edu

z.umn.edu/familymedicinefacebook





Family Medicine and Community Health

UNIVERSITY OF MINNESOTA

Driven to DiscoverSM

The University of Minnesota is an equal opportunity educator and employer. This publication is available in alternative formats upon request. Direct requests to 612-624-3120. ©2011 Regents of the University of Minnesota. All rights reserved.